



# *A Journey of Discovery*

---

## **Appendix A**

### **Survey of Current Interpretive and Informational Signs In the Trail Tales Project Area as of March 2012**

#### **Acknowledgement:**

Thanks to the WSU Skagit County Beach Watchers who performed the survey and gathered the information contained in this appendix. Special thanks to Tim Vogel for coordinating this effort.

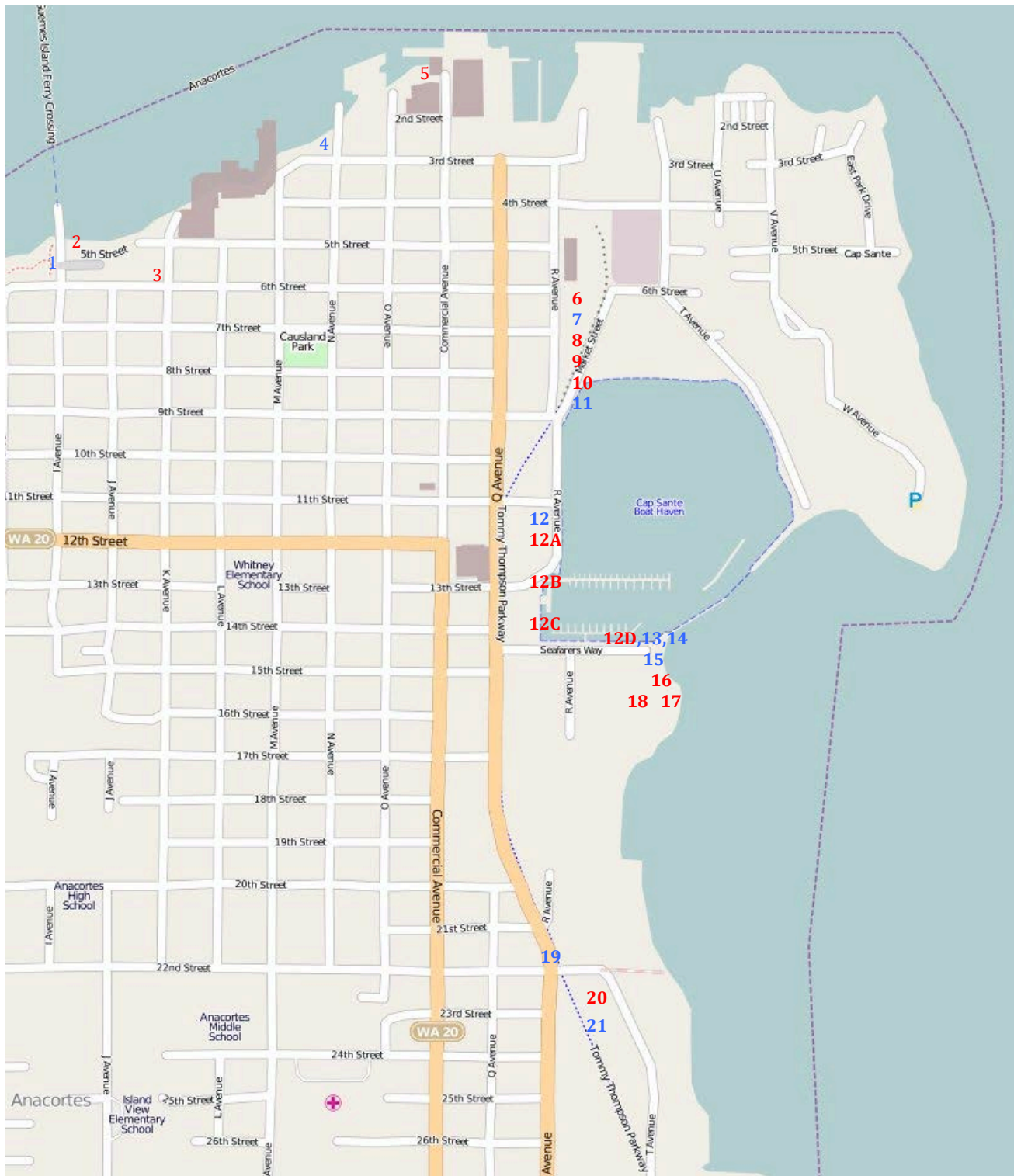


Figure 1, Part 1. Location of Current Interpretive Signs (Numbered in Red) and Other Signs/Artwork/Memorials (Numbered in Blue) Along the Project Route from the Guemes Ferry Landing to the Intersection of the Tommy Thompson Trail and T Avenue. Refer to Appendix A for Sign Descriptions Listed by Location Number. Map base source: [www.streetmap.com](http://www.streetmap.com).

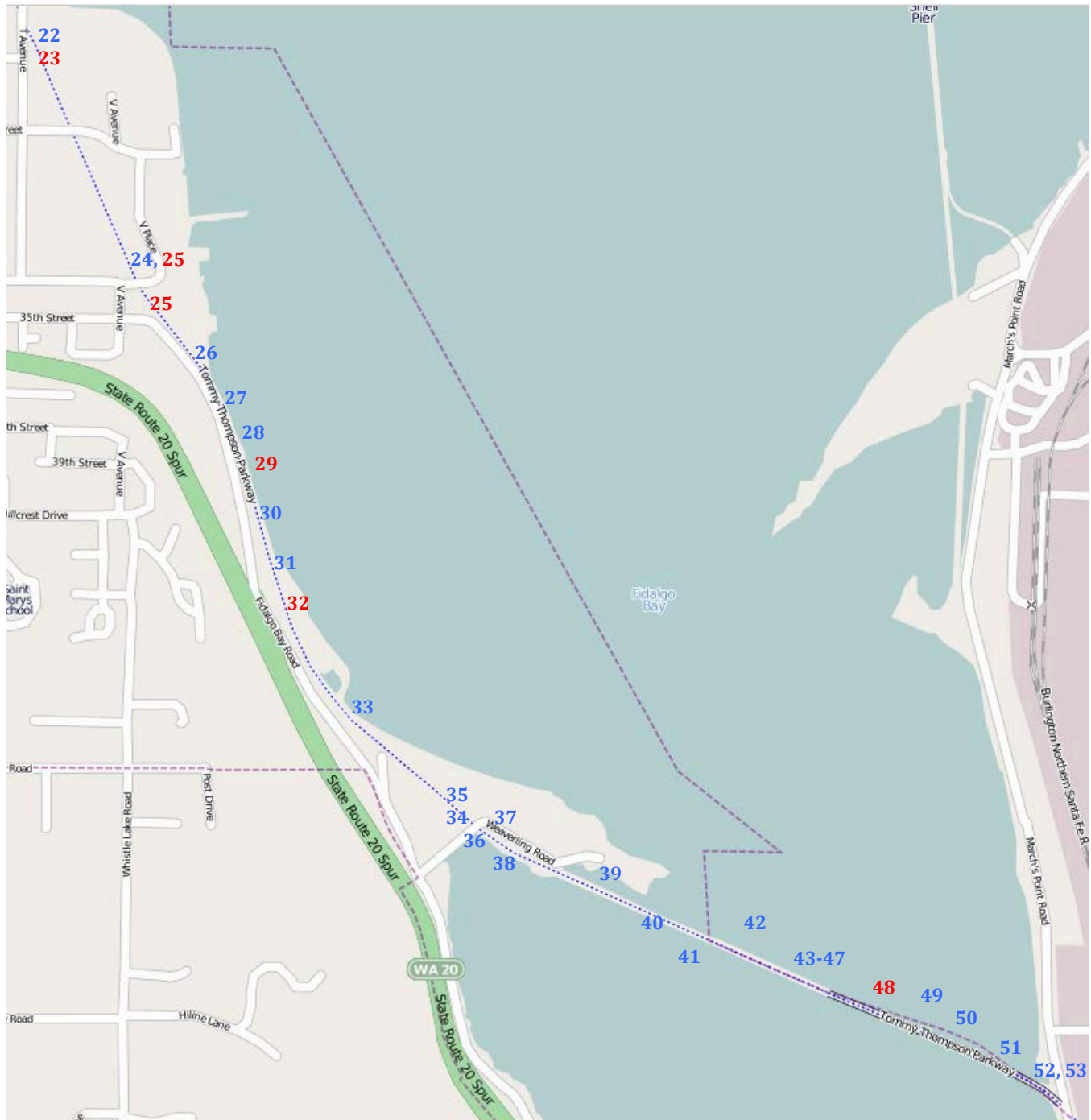


Figure 1, Part 2. Location of Current Interpretive Signs (Numbered in Red) and Other Signs/Artwork/Memorials (Numbered in Blue) Along the Tommy Thompson Trail from 27<sup>th</sup> Street to the Trails End at March Point. Refer to Appendix A for Sign Descriptions Listed by Location Number. Base Map from [www.openstreetmap.com](http://www.openstreetmap.com).



**Map Number:** 1

**Title:** *Windsong*

**Subject:** Artwork; Sculpture by Leo Osborne Dedicated to Peace

**Sponsor:** Noon Kiwanis Club of Anacortes

**Location:** Kiwanis Park at Guemes Ferry Terminal; 6<sup>th</sup> Street and I Avenue

**Size (inches):**      **Sign Height:** 6      **Sign Width:** 6  
**Thickness (laminates):**  
**Height Above Ground to Bottom of Sign/Frame:** 25

**Mounting Arrangement:** Bronze sculpture sitting on concrete pad

**Sign Materials:** Metal on sculpture

**Style/Color:** Text only; bronze with raised lettering

**Condition:** Good

**Additional Notes:** Anacortes City Arts Commission, City of Anacortes, Anacortes Parks, Installed April 2007



**Map Number:** 2

**Title:** Apex Fish Company

**Subject:** Area history

**Sponsor:** Anacortes Museum

**Location:** Guemes Ferry Landing; 6<sup>th</sup> Street and I Avenue

**Size (inches):**      **Sign Height =**                      **Sign Width =**  
**Thickness (laminates) =**  
**Height Above Ground to Bottom of Sign/Frame =**

**Mounting Arrangement:** Metal exhibit base with two posts and outer frame

**Sign Materials:** High pressure laminate

**Style/Color:** Photos with captions; 50%photo/50% text; sepia tone (historical)

**Condition:** Good

**Additional Notes:** mounted into side of stairway and sidewalk



**Map Number:** 3

**Title:** *Fish as Far as Your Eyes Can See*

**Subject:** Area history and tribal culture

**Sponsor:** Skagit County

**Location:** NW corner of K Avenue and 6<sup>th</sup> Street

**Size (inches):**      **Sign Height** = 30 ½      **Sign Width** = 92  
**Thickness (laminates)** = ¾  
**Height Above Ground to Bottom of Sign/Frame:** 31

**Mounting Arrangement:** Metal exhibit base with two posts and outer frame

**Sign Materials:** Laminated paper with Plexiglas cover

**Style/Color:** Photos with captions; sepia tone (historical)

**Condition:** Good

**Additional Notes:**



**Map Number:** 4

**Title:** *Welcome to N-Avenue Park*

**Subject:** Rules/Regulations

**Sponsor:** City of Anacortes

**Location:** N Avenue and Guemes Channel

**Size (inches):**      **Sign Height** = 17 ½              **Sign Width** =23  
                                  **Thickness (laminates)** = ½  
                                  **Height Above Ground to Bottom of Sign/Frame** =30

**Mounting Arrangement:** Wooden base with two posts

**Sign Materials:** high pressure laminate with no cover; laminate over wood

**Style/Color:** Text with blue and black logo

**Condition:** Needs cleaning/repair

**Additional Notes:**



**Map Number:** 5

**Title:** *Railroad Avenue Mitigation Site*

**Subject:** Environmental/Protection; explains compensation process for ecological functions

**Sponsor:** Port of Anacortes, Skagit Marine Resources Committee

**Location:** Railroad Avenue West of Transit Shed

**Size (inches):**      **Sign Height** = 18              **Sign Width** = 24  
                                 **Thickness (laminates)** = 1/2  
                                 **Height Above Ground to Bottom of Sign/Frame** = 38

**Mounting Arrangement:** Metal exhibit base with one square post on concrete footing

**Sign Materials:** Laminated paper with Plexiglas cover

**Style/Color:** 11 photos with extensive text in captions and 1 drawing

**Condition:** Good

**Additional Notes:**





**Map Number:** 6

**Title:** Depot, circa 1915

**Subject:** Area history

**Sponsor:** Anacortes Museum

**Location:** Train depot at 7<sup>th</sup> and R Avenue

**Size (inches):**      **Sign Height** = 23                      **Sign Width** = 35  
                                  **Thickness (laminates)** = 1 ¾  
                                  **Height Above Ground to Bottom of Sign/Frame** = 31

**Mounting Arrangement:** Metal exhibit base with two posts and outer frame

**Sign Materials:** Laminated paper with Plexiglas cover

**Style/Color:** 50% Sepia photos; 50% text/captions; gold/yellow

**Condition:** Good; needs cleaning

**Additional Notes:** size with including frame = 24.5 x 40.5



**Map Number:** 7

**Title:** *W.T. Preston Snagboat Heritage Center*

**Subject:** Descriptive marker

**Sponsor:** City of Anacortes

**Location:** 8<sup>th</sup> and R Avenue

**Size (inches):**      **Sign Height =**                      **Sign Width =**  
                                 **Thickness (laminates) =**  
                                 **Height Above Ground to Bottom of Sign/Frame =**

**Mounting Arrangement:**

**Sign Materials:**

**Style/Color:**

**Condition:** Good

**Additional Notes:**



**Map Number:** 8

**Title:** *Powered by Steam*

**Subject:** Area history

**Sponsor:** Anacortes Museum & Maritime Center, Anacortes Parks & Recreations Department, Anacortes Tourism Promotion Fund

**Location:**

**Size (inches):**      **Sign Height =**                      **Sign Width =**  
**Thickness (laminates) =**  
**Height Above Ground to Bottom of Sign/Frame =**

**Mounting Arrangement:** Metal exhibit base with two posts with outer frame on concrete footing

**Sign Materials:** High pressure laminate with no cover

**Style/Color:** 50% Photos/50% text, sepia tone

**Condition:** Good

**Additional Notes:**



**Map Number:** 9

**Title:** *Life Aboard a Snagboat*

**Subject:** Area History

**Sponsor:** Anacortes Museum & Maritime Center, Anacortes Parks & Recreations Department, Anacortes Tourism Promotion Fund

**Location:** 6<sup>th</sup> and R Avenue

**Size (inches):**      **Sign Height =**                      **Sign Width =**  
                                  **Thickness (laminates) =**  
                                  **Height Above Ground to Bottom of Sign/Frame =**

**Mounting Arrangement:** Metal exhibit base with two posts with outer frame on concrete footing

**Sign Materials:** High pressure laminate with no cover

**Style/Color:** 50% photos/50% text, sepia tone

**Condition:** Good

**Additional Notes:**



**Map Number:** 10

**Title:** *Snagging*

**Subject:** Area history

**Sponsor:** Anacortes Museum & Maritime Center, Anacortes Parks & Recreations Department, Anacortes Tourism Promotion Fund

**Location:** 6<sup>th</sup> and R Avenue

**Size (inches):**      **Sign Height =**                      **Sign Width =**  
**Thickness (laminates) =**  
**Height Above Ground to Bottom of Sign/Frame =**

**Mounting Arrangement:** Metal exhibit base with two posts with outer frame on concrete footing

**Sign Materials:** High pressure laminate with no cover

**Style/Color:** 50% photo/graphics and 50% text, sepia tone

**Condition:** Good

**Additional Notes:**



**Map Number:** 11

**Title:** *Altair - Americus Memorial Park*

**Subject:** Memorial marker

**Sponsor:**

**Location:** R Avenue, just south of the W.T. Preston Snagboat

**Size (inches):**      **Sign Height =**                      **Sign Width =**  
                                 **Thickness (laminates) =**  
                                 **Height Above Ground to Bottom of Sign/Frame =**

**Mounting Arrangement:** Wooden boards with two wood posts on cement pad

**Sign Materials:** Bronze with raised lettering

**Style/Color:** Text only; weathered bronze

**Condition:** Good

**Additional Notes:**



**Map Number:** 12

**Title:** *Annie Curtis*

**Subject:** Artwork, descriptive marker, area history

**Sponsor:** Port of Anacortes, Anacortes Arts Festival, Nordic Tugs, Northern Marine Company LLC, Skipper Cress Yacht Sales

**Location:** South of the Anacortes Marina Office Building

**Size (inches):**      **Sign Height =**                      **Sign Width =**  
**Thickness (laminates) =**  
**Height Above Ground to Bottom of Sign/Frame =**

**Mounting Arrangement:** Inset into concrete base

**Sign Materials:** Bronze with raised lettering

**Style/Color:** Text only; weathered bronze

**Condition:** Good

**Additional Notes:**



**Map Number:** 12A

**Title:** Marina Kiosk

**Subject:** Various events and Marina/Port postings

**Sponsor:** Port of Anacortes

**Location:** Port Harbor office at ramp down to docks

**Size (inches):**      **Sign Height =**                      **Sign Width =**  
**Thickness (laminates) =**  
**Height Above Ground to Bottom of Sign/Frame =**

**Mounting Arrangement:** Three display cases mounted on covered kiosk

**Sign Materials:**

**Style/Color:** Marina/port Informational postings

**Condition:** Good

**Additional Notes:**





**Map Number:** 12B

**Title:** What's under there?

**Subject:** Marine/Ecology - wildlife

**Sponsor:** Port of Anacortes

**Location:** Behind Anthony's

**Size (inches):**      **Sign Height** = 18"      **Sign Width** = 24"

**Thickness (laminates)** = ½"

**Height Above Ground to Bottom of Sign/Frame** = 24"

**Mounting Arrangement:** Metal exhibit base with single post

**Sign Materials:** High pressure laminate with tempered glass cover; ½" spacing between sign and glass

**Style/Color:** 50% Photos; 50% text/captions

**Condition:** Good

**Additional Notes:**



**Map Number:** 12C

**Title:** Back when...

**Subject:** Area history - marina

**Sponsor:** Port of Anacortes

**Location:** Behind marina storage buildings neat intersection with Seafarer's Way

**Size (inches):**      **Sign Height** = 18"      **Sign Width** = 24"

**Thickness (laminates)** = ½"

**Height Above Ground to Bottom of Sign/Frame** = 24"

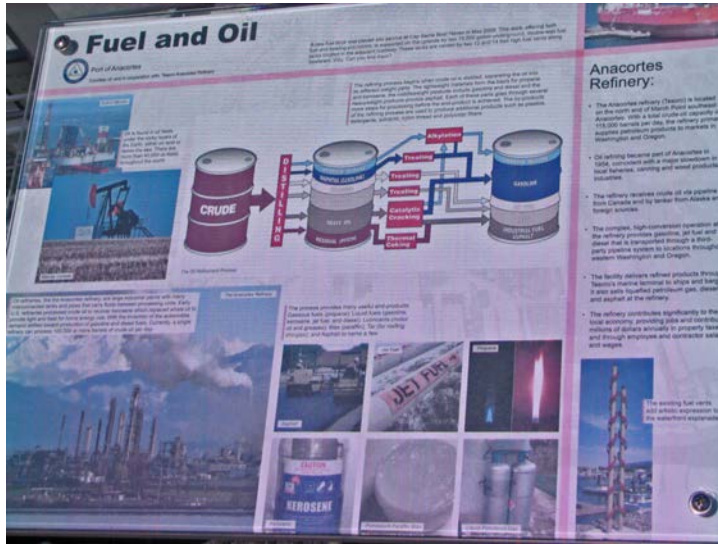
**Mounting Arrangement:** Metal exhibit base with single post

**Sign Materials:** High pressure laminate with tempered glass cover; ½" spacing between sign and glass

**Style/Color:** Sepia/historical photographs with captions

**Condition:** Good but needs cleaning

**Additional Notes:**



**Map Number:** 12D

**Title:** Fuel and Oil

**Subject:** Area history – oil refining

**Sponsor:** Port of Anacortes

**Location:** On sidewalk above fuel dock near north end of Seafarer’s Memorial Park

**Size (inches):**      **Sign Height = 18”**      **Sign Width = 24”**

**Thickness (laminates) = ½”**

**Height Above Ground to Bottom of Sign/Frame = 24”**

**Mounting Arrangement:** Metal exhibit base with single post

**Sign Materials:** High pressure laminate with tempered glass cover; ½” spacing between sign and glass

**Style/Color:** Photographs and graphics with captions

**Condition:** Good

**Additional Notes:**



**Map Number:** 13

**Title:** *Seafarer's Memorial*

**Subject:** Memorial marker, artwork

**Sponsor:**

**Location:** North end off Seafarer's Memorial Park

**Size (inches):**      **Sign Height =**                      **Sign Width =**  
**Thickness (laminates) =**  
**Height Above Ground to Bottom of Sign/Frame =**

**Mounting Arrangement:** Inset into concrete base

**Sign Materials:** Bronze with raised lettering

**Style/Color:** Text only; weather bronze

**Condition:** Good, natural weathering apparent but still readable

**Additional Notes:**



**Map Number:** 14

**Title:** *Lady of the Sea*

**Subject:** Artwork, descriptive marker

**Sponsor:**

**Location:** North end of Seafarer’s Memorial Park

**Size (inches):**      **Sign Height =**                      **Sign Width =**  
**Thickness (laminates) =**  
**Height Above Ground to Bottom of Sign/Frame =**

**Mounting Arrangement:** Mounted on cement/rock base

**Sign Materials:** Bronze with raised lettering

**Style/Color:** Text only; weathered bronze

**Condition:** Good

**Additional Notes:**



# *A Journey of Discovery*

---



**Map Number:** 15

**Title:** *Welcome to Seafarer's Memorial Park*

**Subject:** Descriptive Marker

**Sponsor:** Port of Anacortes, Department of Ecology, Kimberly-Clark Corporation, Washington State Recreation & Conservation Funding Board, Soroptimist International of Anacortes

**Location:** Seafarer's Memorial Park on sidewalk near parking lot

**Size (inches):**      **Sign Height =**                      **Sign Width =**  
                                  **Thickness (laminates) =**  
                                  **Height Above Ground to Bottom of Sign/Frame =**

**Mounting Arrangement:** Metal exhibit base with two posts

**Sign Materials:** Laminated paper

**Style/Color:** Text with logos

**Condition:** Good

**Additional Notes:** Not a very nice quality sign compared to the three other interpretive signs mounted nearby



**Map Number:** 16

**Title:** *Underwater Meadows*

**Subject:** Marine ecology, environment/protection, wetland restoration/mitigation

**Sponsor:** Port of Anacortes, Washington Department of Ecology

**Location:** Seafarer’s Memorial Park along walkway

**Size (inches):**      **Sign Height =**                      **Sign Width =**  
                                  **Thickness (laminates) =**  
                                  **Height Above Ground to Bottom of Sign/Frame =**

**Mounting Arrangement:** Metal exhibit base with one post

**Sign Materials:** High pressure laminate with Plexiglas cover

**Style/Color:** Photos and graphics with captions

**Condition:** Good

**Additional Notes:**





**Map Number:** 17

**Title:** *The Power of the Waves*

**Subject:** Environment/protection

**Sponsor:** Port of Anacortes, Washington Department of Ecology

**Location:** Seafarer's Memorial Park along walkway

**Size (inches):**      **Sign Height =**                      **Sign Width =**  
**Thickness (laminates) =**  
**Height Above Ground to Bottom of Sign/Frame =**

**Mounting Arrangement:** Metal exhibit base with one post

**Sign Materials:** High pressure laminate with Plexiglas cover

**Style/Color:** Photos and graphics with captions

**Condition:** Good

**Additional Notes:**



**Map Number:** 18

**Title:** *From Pulp to Park*

**Subject:** Area History, tribal culture, environment/protection

**Sponsor:** Port of Anacortes, Washington Department of Ecology

**Location:** Seafarer’s Memorial Park northeast corner of restroom building

**Size (inches):**      **Sign Height =**                      **Sign Width =**  
**Thickness (laminates) =**  
**Height Above Ground to Bottom of Sign/Frame =**

**Mounting Arrangement:** Metal exhibit base with one post

**Sign Materials:** High pressure laminate with Plexiglas cover

**Style/Color:** Photos and graphics with captions

**Condition:** Good

**Additional Notes:**



**Map Number:** 19

**Title:** *Thompson Parkway Rules*

**Subject:** Rules/Regulations

**Sponsor:** City of Anacortes

**Location:** Four locations; 22<sup>nd</sup> and R Avenue - one in restroom parking lot and one along trail; 34<sup>th</sup> Street; and Fidalgo Bay Resort at Weaverling Road

**Size (inches):**      **Sign Height** = 11 ½      **Sign Width** = 7 ½  
**Thickness (laminates)** =  
**Height Above Ground to Bottom of Sign/Frame** = 34

**Mounting Arrangement:** One wooden post

**Sign Materials:** Sheet metal

**Style/Color:** Text only; navy blue background with white letters

**Condition:** Good

**Additional Notes:**



**Map Number:** 20

**Title:** *Rail Link*

**Subject:** Area history

**Sponsor:** Anacortes Historic Preservation Board, Anacortes Museum and Maritime Center and Anacortes Parks and Recreation Department

**Location:** 100 Yards southeast of the intersection of 22<sup>nd</sup> Street and R Avenue

**Size (inches):**      **Sign Height** = 24 ½      **Sign Width** =36  
**Thickness (laminates)** = 2  
**Height Above Ground to Bottom of Sign/Frame** =30

**Mounting Arrangement:** Metal exhibit base with two posts and outer frame on concrete footing

**Sign Materials:** Laminated paper with Plexiglas cover

**Style/Color:** 50% sepia tone photos; 50% text/captions

**Condition:** Needs repair/replacement; water stains from leakage

**Additional Notes:** 45° Tilt allows for easy viewing and reading



**Map Number:** 21

**Title:** *Thompson Trail ½ Mile*

**Subject:** Way finding; distance marker

**Sponsor:**

**Location:** ½ Mile from beginning of trail (22<sup>nd</sup> Street and R Avenue) on both sides

**Size (inches):**      **Sign Height** = 22                      **Sign Width** = 4.5  
                                 **Thickness (laminates)** = ¼  
                                 **Height Above Ground to Bottom of Sign/Frame** = 0

**Mounting Arrangement:** Wood base

**Sign Materials:** Steel plate

**Style/Color:** Text only; laser cut lettering in steel

**Condition:** Good

**Additional Notes:**



**Map Number:** 22

**Title:** *Tommy Thompson Parking*

**Subject:** Way finding

**Sponsor:** Soroptimists

**Location:** R Avenue and 27<sup>th</sup>

**Size (inches):**      **Sign Height** = 23                      **Sign Width** = 47  
                                 **Thickness (laminates)** =  $\frac{1}{3}$   
                                 **Height Above Ground to Bottom of Sign/Frame** = 11  $\frac{1}{2}$

**Mounting Arrangement:** Steel base with two posts

**Sign Materials:** Steel

**Style/Color:** Text with logo; dark brown with white lettering; red in logo

**Condition:** Good

**Additional Notes:**



**Map Number:** 23

**Title:** *The Tommy Thompson Mural Project*

**Subject:** Artwork

**Sponsor:** Anacortes Arts Festival

**Location:** 50 Yards south of 27th

**Size (inches):**      **Sign Height** = 24 ½              **Sign Width** = 36  
**Thickness (laminates)** = 2  
**Height Above Ground to Bottom of Sign/Frame** = 30

**Mounting Arrangement:** Metal exhibit base with two posts and outer frame on concrete footing

**Sign Materials:** Laminated paper with Plexiglas cover

**Style/Color:** 50% Color graphics; 50% captions/text

**Condition:** Good

**Additional Notes:** Features some murals from past events



**Map Number:** 24

**Title:** 34<sup>th</sup> Street Station

**Subject:** Message board

**Sponsor:**

**Location:** Tommy Thompson Trail at 34<sup>th</sup> Street

**Size (inches):**      **Sign Height =**                      **Sign Width =**  
**Thickness (laminates) =**  
**Height Above Ground to Bottom of Sign/Frame =**

**Mounting Arrangement:** Decorative metal frame with two posts

**Sign Materials:** Wood

**Style/Color:** Text only

**Condition:** Good

**Additional Notes:**





**Map Number:** 25

**Title:** *Former Custom Plywood Mill Clean-up Project*

**Subject:** Area history and environmental/protection

**Sponsor:** Department of Ecology

**Location:** Two locations; At the end of 34<sup>th</sup> Street 100 yards east of the Tommy Thompson Trail and on the Tommy Thompson Trail 600 yards south of 34<sup>th</sup> Street

**Size (inches):**      **Sign Height** = 48                      **Sign Width** = 60  
                                  **Thickness (laminates)** = ¼  
                                  **Height Above Ground to Bottom of Sign/Frame** =48

**Mounting Arrangement:** Wood base with two posts mounted on plywood

**Sign Materials:** Laminate paper with Plexiglas cover

**Style/Color:** Color graphics with descriptive text and photos with captions

**Condition:** Needs repair, poster has crumpled within the case

**Additional Notes:** Additional smaller sign, *Smelt Notice*, at one location may be temporary; yacht sales advertisements posted at one location



**Map Number:** 26

**Title:** *Rotary Old Mill Park*

**Subject:** Descriptive marker

**Sponsor:** Fidalgo Island Rotary Club

**Location:** Tommy Thompson Trail south of 34<sup>th</sup>

**Size (inches):**      **Sign Height** = 18                      **Sign Width** = 12  
                                 **Thickness (laminates)** = 1/8  
                                 **Height Above Ground to Bottom of Sign/Frame** = 11.5

**Mounting Arrangement:** One wooden post

**Sign Materials:** Metal

**Style/Color:** Text only; white background with blue lettering

**Condition:** Good

**Additional Notes:**



**Map Number:** 27

**Title:** *Friendship Bench*

**Subject:** Descriptive marker

**Sponsor:** Wallace Groda Family and Mike and Joyce Young

**Location:** Tommy Thompson Trail between Rotary Park and otter sculpture

**Size (inches):**      **Sign Height** = 4                      **Sign Width** = 6  
                                 **Thickness (laminates)** = ½  
                                 **Height Above Ground to Bottom of Sign/Frame** = 32

**Mounting Arrangement:** Embedded in bench

**Sign Materials:** Bronze plaque

**Style/Color:** Text only; weathered bronze

**Condition:** Good

**Additional Notes:**



**Map Number:** 28

**Title:** *SKA-ATL the OTTER*

**Subject:** Descriptive marker, artwork

**Sponsor:** Anacortes Arts Festival

**Location:** Tommy Thompson Trail between the Friendship Bench and Forage Fish interpretive sign

**Size (inches):**      **Sign Height** = 8 <sup>3</sup>/<sub>4</sub>                      **Sign Width** = 10 <sup>1</sup>/<sub>2</sub>  
**Thickness (laminates)** = 1 <sup>1</sup>/<sub>2</sub>  
**Height Above Ground to Bottom of Sign/Frame** = 14.5

**Mounting Arrangement:** Single metal post

**Sign Materials:** Granite with laser cut lettering

**Style/Color:** Text only; black with white lettering

**Condition:** Good

**Additional Notes:**



**Map Number:** 29

**Title:** *Forage Fish: A Delicate Link in the Marine Food Web; Forage Fish are a Critical Food Source*

**Subject:** Marine/Ecology

**Sponsor:** Skagit Marine Resources Committee

**Location:** Tommy Thompson Trail south of the otter sculpture

**Size (inches):**      **Sign Height** = 24 ½      **Sign Width** = 36  
**Thickness (laminates)** =  
**Height Above Ground to Bottom of Sign/Frame** = 30

**Mounting Arrangement:** Metal exhibit base with two posts and outer frame on concrete footing

**Sign Materials:** Laminated paper with Plexiglas cover

**Style/Color:** Mainly text with small graphics and photos

**Condition:** Needs cleaning or repair

**Additional Notes:** Some water leakage; leakage does not impair main points and graphics



**Map Number:** 30

**Title:** *In Honor of Jim & Jeanine Murphy*

**Subject:** Descriptive marker, dedication

**Sponsor:** Family/Friends

**Location:** Tommy Thompson Trail between Forage Fish interpretive sign and the Knudson bench

**Size (inches):**      **Sign Height** = 4                      **Sign Width** = 6  
                                  **Thickness (laminates)** = ½  
                                  **Height Above Ground to Bottom of Sign/Frame** = 32

**Mounting Arrangement:** Embedded in bench

**Sign Materials:** Bronze plaque

**Style/Color:** Text only; weathered bronze

**Condition:** Good

**Additional Notes:**



**Map Number:** 31

**Title:** *In loving memory of Gary Knudson*

**Subject:** Descriptive marker, dedication

**Sponsor:** Family/Friends

**Location:** Tommy Thompson Trail between the Murphy bench and the second Forage Fish interpretive sign

**Size (inches):**      **Sign Height** = 4                      **Sign Width** = 6  
                                  **Thickness (laminates)** = ½  
                                  **Height Above Ground to Bottom of Sign/Frame** = 32

**Mounting Arrangement:** Embedded in bench

**Sign Materials:** Bronze plaque

**Style/Color:** Text only; weathered bronze

**Condition:** Good

**Additional Notes:**



**Map Number:** 32

**Title:** *Forage Fish: A Delicate Link in the Marine Food Web; Forage Fish are a Critical Food Source; Forage Fish Face a Variety of Threats*

**Subject:** Marine/Ecology

**Sponsor:** Skagit Marine Resources Committee

**Location:** Tommy Thompson Trail south of the otter sculpture

**Size (inches):**      **Sign Height** = 24 ½      **Sign Width** = 36  
**Thickness (laminates)** =  
**Height Above Ground to Bottom of Sign/Frame** = 30

**Mounting Arrangement:** Metal exhibit base with two posts and outer frame on concrete footing

**Sign Materials:** Laminated paper with Plexiglas cover

**Style/Color:** Mainly text with small graphics and photos

**Condition:** Needs cleaning or repair

**Additional Notes:** Some water leakage; leakage does not impair main points or photos





**Map Number:** 33

**Title:** *Historical Site of Mitchell Log Boom Company*

**Subject:** Descriptive marker, dedication

**Sponsor:** Family/Friends

**Location:** Tommy Thompson Trail between Forage Fish Threats interpretive sign and Fidalgo Bay Resort

**Size (inches):**      **Sign Height** = 4                      **Sign Width** = 6  
                                  **Thickness (laminates)** = 1/2  
                                  **Height Above Ground to Bottom of Sign/Frame** = 32

**Mounting Arrangement:** Embedded in bench

**Sign Materials:** Bronze plaque

**Style/Color:** Text only; weathered bronze

**Condition:** Good

**Additional Notes:**



**Map Number:** 34

**Title:** *Tommy Thompson Trail Parking*

**Subject:** Descriptive Marker, way finding

**Sponsor:**

**Location:** Fidalgo Bay Resort

**Size (inches):**      **Sign Height = 18**                      **Sign Width = 12**  
**Thickness (laminates) =**  
**Height Above Ground to Bottom of Sign/Frame = 28**

**Mounting Arrangement:** Single wooden post

**Sign Materials:** Metal

**Style/Color:** Text only; brown with white letters

**Condition:** Good

**Additional Notes:**



**Map Number:** 35

**Title:** *Spirit of the Samish*

**Subject:** Tribal culture; artwork; describes the meaning of the welcoming pole carved by Coastal Salish carver Tsul-ton

**Sponsor:** Samish Nation

**Location:** Entrance to Fidalgo Bay Resort

**Size (inches):**      **Sign Height** = 11 ½      **Sign Width** = 11 ½  
**Thickness (laminates)** = 1  
**Height Above Ground to Bottom of Sign/Frame** = 12

**Mounting Arrangement:** Single metal post

**Sign Materials:** Tempered glass cover over wood and laminate sign

**Style/Color:** Text only; brown background with white lettering

**Condition:** Needs repair or cleaning

**Additional Notes:**



**Map Number:** 36

**Title:** *Motorized Vehicles Prohibited*

**Subject:** Rules/Regulations

**Sponsor:**

**Location:** Tommy Thompson Trail and Weaverling Road; Fidalgo Bay Resort

**Size (inches):**      **Sign Height** = 18                      **Sign Width** = 12  
                                 **Thickness (laminates)** =  $\frac{1}{16}$   
                                 **Height Above Ground to Bottom of Sign/Frame** = 34

**Mounting Arrangement:** Wooden base with one post

**Sign Materials:** Metal

**Style/Color:** Text only; brown background with white lettering

**Condition:** Good

**Additional Notes:**



**Map Number:** 37

**Title:** *Danger Toxic Shellfish*

**Subject:** Health/Safety

**Sponsor:** Washington Department of Health

**Location:** Tommy Thompson Trail and Weaverling Road; Fidalgo Bay Resort

**Size (inches):**      **Sign Height** = 20                      **Sign Width** = 16  
                                 **Thickness (laminates)** =  
                                 **Height Above Ground to Bottom of Sign/Frame** =14

**Mounting Arrangement:** Single wooden post

**Sign Materials:** Metal

**Style/Color:** Text only; red and black background with white lettering

**Condition:**

**Additional Notes:**



**Map Number:** 38

**Title:** *Caution Cyclists: Broken Shells on Trail*

**Subject:** Health/Safety

**Sponsor:**

**Location:** Two locations on the Tommy Thompson Trail; Weaverling Road at Fidalgo Bay Resort and the trail end at March Point

**Size (inches):**      **Sign Height** = 18                      **Sign Width** = 12  
                                 **Thickness (laminates)** =  
                                 **Height Above Ground to Bottom of Sign/Frame** = 14

**Mounting Arrangement:** Single wooden post

**Sign Materials:** Metal

**Style/Color:** Text only; white background with red lettering

**Condition:** Good; needs (possible) replacement

**Additional Notes:** Replace with interpretive sign about bird use of the hard trail surface as a tool to crack open shells and obtain food



**Map Number:** 39

**Title:** *Keep Well Walk, Walk, Walk*

**Subject:** Descriptive marker

**Sponsor:** Bud and Ann Merle

**Location:** Tommy Thompson Trail between Fidalgo Bay Resort and trestle

**Size (inches):**      **Sign Height** = 4                      **Sign Width** = 6  
                                 **Thickness (laminates)** = ½  
                                 **Height Above Ground to Bottom of Sign/Frame** = 32

**Mounting Arrangement:** Imbedded in bench

**Sign Materials:** Bronze

**Style/Color:** Text only; weathered bronze

**Condition:** Good

**Additional Notes:**



**Map Number:** 40

**Title:** *To Honor the Memory of Rick Schwab*

**Subject:** Descriptive marker; dedication

**Sponsor:** Family/Friends

**Location:** Tommy Thompson Trail between Fidalgo Bay Resort and trestle

**Size (inches):**      **Sign Height** = 4                      **Sign Width** = 6  
                                 **Thickness (laminates)** = 1/2  
                                 **Height Above Ground to Bottom of Sign/Frame** = 32

**Mounting Arrangement:** Imbedded in bench

**Sign Materials:** Bronze

**Style/Color:** Text only; weathered bronze

**Condition:** Good

**Additional Notes:**





**Map Number:** 41

**Title:** *To Honor the Memory of Edna and Erwin Malson*

**Subject:** Descriptive marker; dedication

**Sponsor:** Family/Friends

**Location:** Tommy Thompson Trail between Fidalgo Bay Resort and trestle

**Size (inches):**      **Sign Height** = 4                      **Sign Width** = 6  
                                 **Thickness (laminates)** = 1/2  
                                 **Height Above Ground to Bottom of Sign/Frame** = 32

**Mounting Arrangement:** Imbedded in bench

**Sign Materials:** Bronze

**Style/Color:** Text only; weathered bronze

**Condition:** Good

**Additional Notes:**



**Map Number:** 42

**Title:** *In Loving Memory Annette K. Williams*

**Subject:** Descriptive marker; dedication

**Sponsor:** Family/Friends

**Location:** Tommy Thompson Trail between Fidalgo Bay Resort and trestle

**Size (inches):**      **Sign Height** = 4                      **Sign Width** = 6  
                                  **Thickness (laminates)** = 1/2  
                                  **Height Above Ground to Bottom of Sign/Frame** = 32

**Mounting Arrangement:** Imbedded in bench

**Sign Materials:** Bronze

**Style/Color:** Text only; weathered bronze

**Condition:** Good

**Additional Notes:**



**Map Number:** 43

**Title:** *Caution Decking May Be Slippery*

**Subject:** Health/Safety

**Sponsor:**

**Location:** Two locations on Tommy Thompson Trail; east and west ends of trestle

**Size (inches):**      **Sign Height = 18**                      **Sign Width = 24**  
**Thickness (laminates) =**  
**Height Above Ground to Bottom of Sign/Frame = 24"**

**Mounting Arrangement:** Mounted on chain link fence

**Sign Materials:** Metal

**Style/Color:** Text only; black and yellow background and lettering

**Condition:** Good

**Additional Notes:**



**Map Number:** 44

**Title:** *Please Do Not Fish or Crab From Trestle*

**Subject:** Rules/Regulations

**Sponsor:**

**Location:** Tommy Thompson Trail at west end of trestle

**Size (inches):**      **Sign Height** = 18                      **Sign Width** = 12  
**Thickness (laminates)** =  
**Height Above Ground to Bottom of Sign/Frame** = 17

**Mounting Arrangement:** Mounted on chain link fence

**Sign Materials:** Metal

**Style/Color:** Text only; brown with white lettering

**Condition:** Good

**Additional Notes:**



**Map Number:** 45

**Title:** *Warning! All Activities are Being Recorded...*

**Subject:** Rules/Regulations

**Sponsor:**

**Location:** Tommy Thompson Trail at west end of trestle

**Size (inches):**      **Sign Height** =      18      **Sign Width** = 24  
**Thickness (laminates)** = 1/8  
**Height Above Ground to Bottom of Sign/Frame** = 24

**Mounting Arrangement:** Mounted on chain link fence

**Sign Materials:** Metal

**Style/Color:** Text only; white background with red and black lettering

**Condition:** Good

**Additional Notes:**



**Map Number:** 46

**Title:** *Together We Did It*

**Subject:** Descriptive Marker; Artwork

**Sponsor:** Anacortes Arts Festival; City of Anacortes

**Location:** Tommy Thompson Trail west end of trestle

**Size (inches):**      **Sign Height =**                      **Sign Width =**  
**Thickness (laminates) =**  
**Height Above Ground to Bottom of Sign/Frame =**

**Mounting Arrangement:**

**Sign Materials:**

**Style/Color:** Text only; blue background with white lettering

**Condition:** Good

**Additional Notes:** To be installed next to Trestle Arch

The Tommy Thompson Trestle is the outcome of community coming together for a common goal. Working hand in hand we have seen the trestle through initial trail development, damage from a fire and then brought back to life. The dedication shown to this waterfront trail says much about the heart of Anacortes and the beauty of Fidalgo Bay.

*Alone we can do so little. Together we can do so much . . . Helen Keller*

Thank you to the following for contributing to the well being of our community.  
For a complete list of the over 600 donors, go to [www.anacortesparksfoundation.org](http://www.anacortesparksfoundation.org)

<b>TRESTLE DONOR</b> Samish Tribe Puget Sound Energy Foundation Shell Refining Scroggins International of Anacortes <b>SECTION DONOR</b> John Turst Flounder Bay Yacht Club GEMS/Epicure The Lonely Forest Chris & Helen Zimmerman Tenoro Companies, Inc. Anacortes Parks Foundation Memory of Ellen, John, Bill & Frank Winge Cap Sante Court Retirement Community Transpac Marinas, Inc.	<b>PILING DONOR</b> DASH Fish Fund Run Anacortes Noon Kiwanis Foundation Island View Elementary Challenge Class Kristine Schmalz & Michael Sible Clayton & Pauline Leedy Skagit Bicycle Club Skagit Community Band Don & Reanne Douglass John & Michele Pope Pacific NW Trail Assoc. Marcia Hunt Anacortes Middle School Malcolm & Michelle McPhee Stubbeman Family Foundation Tencov Foundation	Anacortes Rotary William & Jennifer Woytki Lake Erie Trucking Bill & Di McGraw Nathaniel Peterson & Dian Koom Richard & Elizabeth Williamson Pardeep & Paula Brar Joanne Tallman Blake A. Thompson Aaron Rasmussen Constance & Mark Wray Fidalgo Island Rotary Woody & Bill Rahel Alfred Carrier & Anne Schreivogal Int'l Association of Firefighters Local 1537 William & Arlene Pfeiffer Compass Wines, LLC	Martha Wilson Kiwanis Sanrisers Kenneth & Enid Oates Anacortes Sister Cities Assn. Steve & Dian Jahn Lanney Wilson MaryKay Pasnick <b>PLANK DONOR</b> AHS DECA Club Mary & Harry Chandler Ray & Carolyn Bloom Jay Han, MD Leslie & Sharon Cooper Cap Sante Inn, LLC Tom Wooten Dean Maxwell	E.L. & K.H. Jensen Neil & Cathy Borman Committee to Re-Elect Dean Maxwell Dennis Rogalsky Anacortes Marine Enterprises Aidan & Caleb Carlisle Kiwanis Aktion Club Jack & Sarah Tobien Norrie Estvold Roger & Jeanie Young Matt & Deanne Tanner Ron & Jan Wesen Ann & Donald Caldwell Ron & Cheri Pinson Nat'l Association of Letter Carriers How It Works USW Local 12-591	Ronald & Sharyann Watts Island Family Physicians, PLLC Debbie & Bill Berthards Woody Ann Thomas Burfield Darrell & Debbie Cornelius Dakota Creek Industries Elton & Ann Merle John & Joyce Innman Tom & Kathleen Flanagan Marc & Pam Estvold Sherman Physical Therapy Puget Sound Energy Jeff & Sonia Hambleton Frank & Frances Arnold Meg Sweeney & Eric Foley Jeralyn Curtis
---	--	---	--	--	--

**Map Number:** 47

**Title:** *Alone we can do so little. Together we can do so much...Helen Keller*

**Subject:** Descriptive marker

**Sponsor:**

**Location:** Tommy Thompson Trail on the trestle

**Size (inches):**      **Sign Height =**      **Sign Width =**  
**Thickness (laminates) =**  
**Height Above Ground to Bottom of Sign/Frame =**

**Mounting Arrangement:**

**Sign Materials:**

**Style/Color:** Mainly text with small photos

**Condition:** Good

**Additional Notes:** To be installed by bench on trestle.



**Map Number:** 48

**Title:** *Wildlife of Fidalgo Bay*

**Subject:** Marine/Ecology

**Sponsor:** Skagit Land Trust

**Location:** Tommy Thompson Trail on trestle

**Size (inches):**      **Sign Height** = 24 ½              **Sign Width** = 36  
                                 **Thickness (laminates)** = 2  
                                 **Height Above Ground to Bottom of Sign/Frame** = 30

**Mounting Arrangement:** Metal exhibit base with two posts and outer frame

**Sign Materials:** Laminated paper with Plexiglas cover

**Style/Color:** 50% photos; 50% text/captions; brown background with white lettering

**Condition:** Good

**Additional Notes:**





**Map Number:** 49

**Title:** *In Memory of Angela Sue*

**Subject:** Dedication

**Sponsor:** Family/Friends

**Location:** Tommy Thompson Trail on the trestle

**Size (inches):**      **Sign Height** = 4                      **Sign Width** = 6  
                                 **Thickness (laminates)** = 1/2  
                                 **Height Above Ground to Bottom of Sign/Frame** = 32

**Mounting Arrangement:** Imbedded in bench

**Sign Materials:** Bronze

**Style/Color:** Text only; weathered bronze

**Condition:** Good

**Additional Notes:**



**Map Number:** 50

**Title:** *In Memory of Carol R. Knowles*

**Subject:** Dedication

**Sponsor:** Family/Friends

**Location:** Tommy Thompson Trail between Fidalgo Bay Resort and trestle

**Size (inches):**      **Sign Height** = 4                      **Sign Width** = 6  
                                 **Thickness (laminates)** = ½  
                                 **Height Above Ground to Bottom of Sign/Frame** = 32

**Mounting Arrangement:** Imbedded in bench

**Sign Materials:** Bronze

**Style/Color:** Text only; weathered bronze

**Condition:** Good

**Additional Notes:**



**Map Number:** 51

**Title:** *Shine Like Stars in the Universe*

**Subject:** Descriptive marker; dedication

**Sponsor:** Silverthorn Family

**Location:** Tommy Thompson Trail between Fidalgo Bay Resort and trestle

**Size (inches):**      **Sign Height** = 4                      **Sign Width** = 6  
                                 **Thickness (laminates)** = ½  
                                 **Height Above Ground to Bottom of Sign/Frame** = 32

**Mounting Arrangement:** Imbedded in bench

**Sign Materials:** Bronze

**Style/Color:** Text only; weathered bronze

**Condition:** Good

**Additional Notes:**



**Map Number:** 52

**Title:** *Trail*

**Subject:** Way finding

**Sponsor:**

**Location:** Tommy Thompson Trail east end at March Point

**Size (inches):**      **Sign Height** = 12                      **Sign Width** = 18  
**Thickness (laminates)** =  
**Height Above Ground to Bottom of Sign/Frame** = 40

**Mounting Arrangement:** Mounted on chain link fence

**Sign Materials:**

**Style/Color:** Text only; brown background with white lettering

**Condition:** Needs replacement

**Additional Notes:** Replace with sign with trail name; *Tommy Thompson Parkway Rules sign* is missing from this end



**Map Number:** 53

**Title:** *Caution: Heavy Industrial Road*

**Subject:** Health/Safety

**Sponsor:**

**Location:** Tommy Thompson Trail east end at March Point

**Size (inches):**      **Sign Height** = 40                      **Sign Width** = 40  
                                 **Thickness (laminates)** =  
                                 **Height Above Ground to Bottom of Sign/Frame** = 1

**Mounting Arrangement:** Mounted on chain link fence

**Sign Materials:** Metal

**Style/Color:** Text only; yellow background with black lettering

**Condition:** Good

**Additional Notes:**